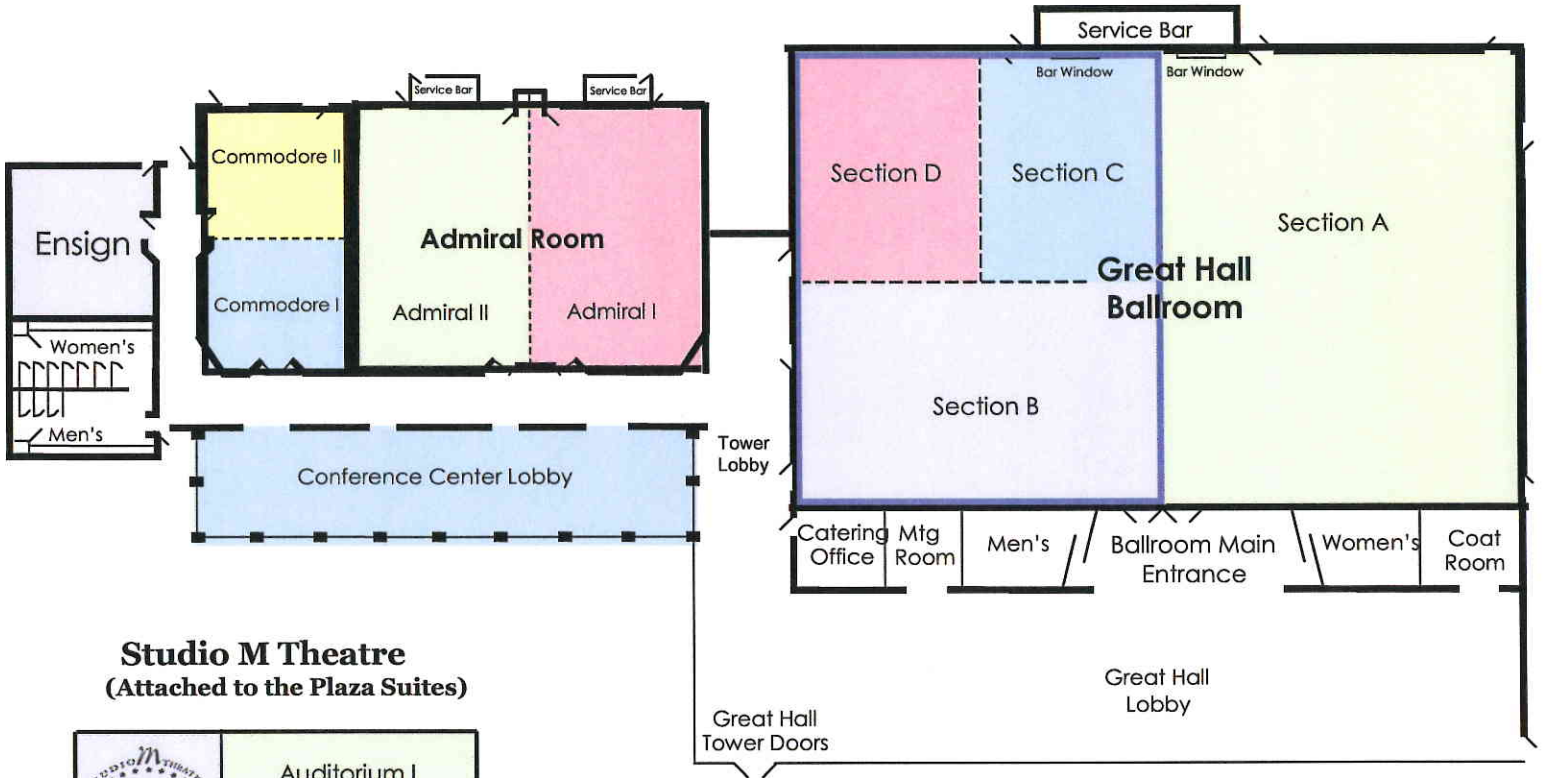


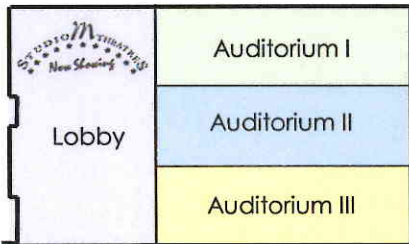


# GREAT HALL

Banquet & Convention Center

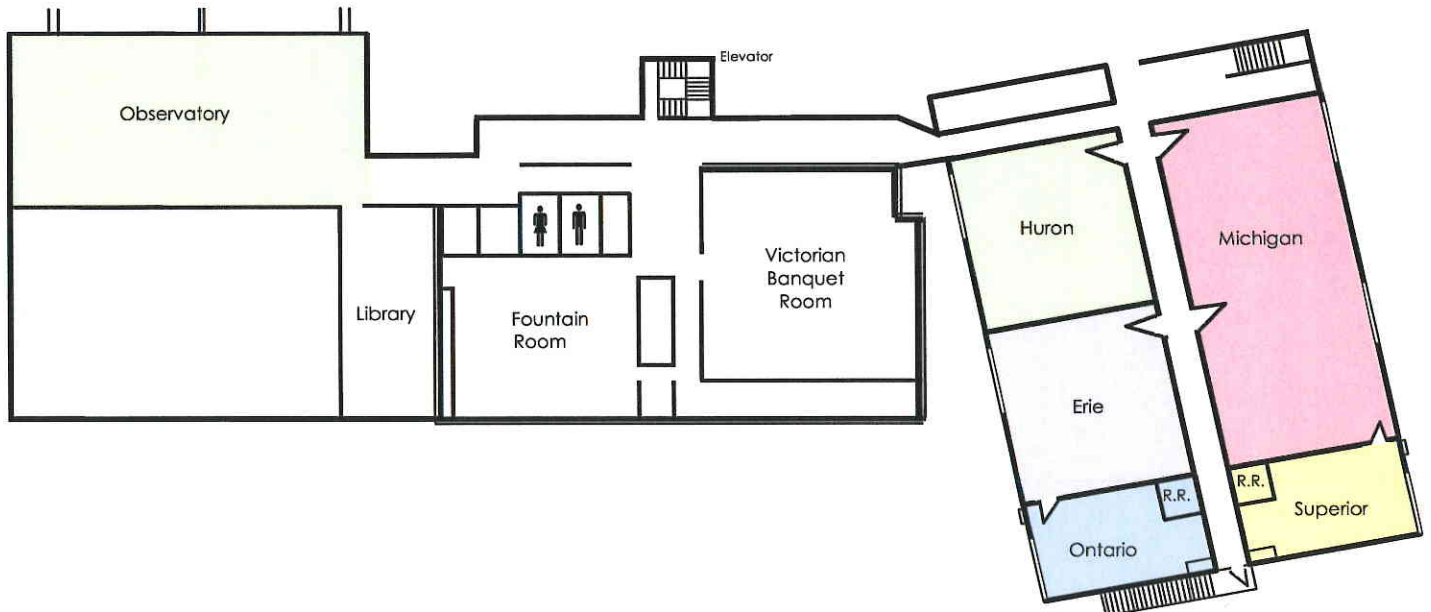


## Studio M Theatre (Attached to the Plaza Suites)



## Great Lakes Meeting Rooms

(Located on Second Floor of the Best Western Hotel)





# GREAT HALL

Banquet & Convention Center

Room	DIMENSIONS						SEATING CAPACITIES				
	Size		Area		Ceiling		Theatre	Classroom	Conf	Banquet	Exhibit
	Ft	m	Sq Ft	Sq m	Ft	m					
<b>Great Hall Ballroom</b>	73x136	23x43	9,928	924	14'	4	1,200	600	-	900	70
Section A	73x68	23x21	4,964	462	14'	4	500	300	-	400	35
Section B, C & D	73x68	23x21	4,964	462	14'	4	500	300	-	400	35
Section B	36x68	11x21	2,448	228	14'	4	200	130	-	130	15
Section C	36x34	11x11	1,224	114	14'	4	120	60	-	60	-
Section D	36x34	11x11	1,224	114	14'	4	120	40	-	50	-
<b>Great Hall Lobby</b>	25x136	-	3,400	-	-	-	400	-	-	200	33
<b>Tower Lobby</b>	23x48	-	1,104	-	-	-	-	-	-	-	-
<b>Conference Center Lobby</b>	94x24	29x8	2,256	210	12'	4	-	-	-	-	-
<b>Admiral Room I &amp; II</b>	76x51	24x16	3,875	360	12'	4	350	160	-	260	25
Admiral I	38x51	12x16	1,938	180	12'	4	160	76	-	130	14
Admiral II	38x51	12x16	1,938	180	12'	4	160	76	-	130	14
<b>Commodore Room I &amp; II</b>	51x28	16x9	1,428	133	12'	4	105	50	50	90	8
Commodore I	25x28	8x9	700	65	12'	4	50	20	24	40	-
Commodore II	25x28	8x9	700	65	12'	4	50	20	24	40	-
<b>Ensign Room</b>	30x32	9x10	960	89	12'	4	50	40	32	50	-
<b>Great Lakes Meeting Rooms ~ located on the Second Floor of the Best Western Hotel</b>											
Michigan	50x25	16x8	1,250	116	8'	3	120	60	35	70	10
Superior	16x14	5x4	224	21	8'	3	15	-	10	10	-
Ontario	16x14	5x4	224	21	8'	3	15	-	10	10	-
Erie	25x25	8x8	625	58	8'	3	30	25	25	40	5
Huron	25x25	8x8	625	58	8'	3	30	25	25	40	5
Observatory	50x30	16x9	1,500	140	12'	4	150	75	50	100	10

Studio M	Seating Capacity
Auditorium I.....	326
Auditorium II.....	325
Auditorium III.....	80
Lobby (reception space) .....	200

*Located at Valley Plaza Resort*